

Issue date: 2017-04-04

Question: How to create a new FlexStand project?

Applies to: All FlexStand OI versions

Answer:

In FlexStand a project is folder on the disk containing user defined the files that FlexStand uses during the execution. This includes the user interface (GUI Plugins), Callbacks, settings files e.t.c.

The most common way to create a new FlexStand project is to make a copy of one of the examples. Making a copy will ensure that all files are in the right location and are names correctly.

In this tutorial, we use the advanced example as a basis for our new project.

Create a new project

Copy one of the example folders that best fit your needs. For example:

```
C:\Users\Public\Documents\National Instruments\TestStand 2012\UserInterfaces\FlexStand OI  
Examples\Advanced
```

To

```
C:\Users\Public\Documents\National Instruments\TestStand 2012\UserInterfaces\Advanced
```

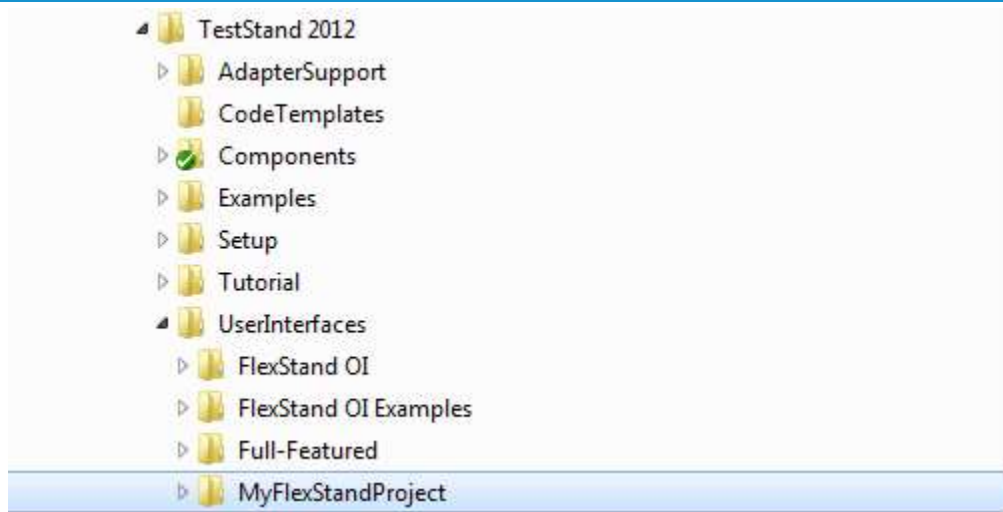
Now rename the folder Advanced to the new project name. For example:

“MyFlexStandProject”.

The final path should now look like this:

FLEXSTAND Operator Interface

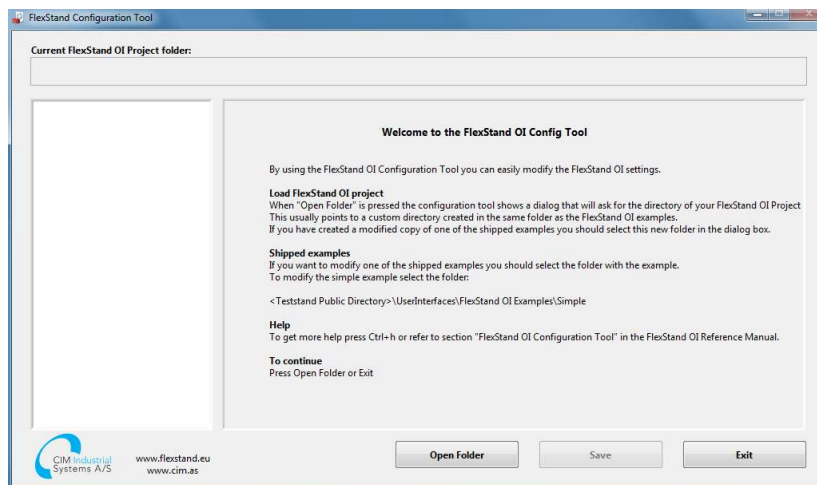
Frequently Asked Question



This will ensure that you have all the right files and sub folders in the right locations.

Configure FlexStand to use the new project.

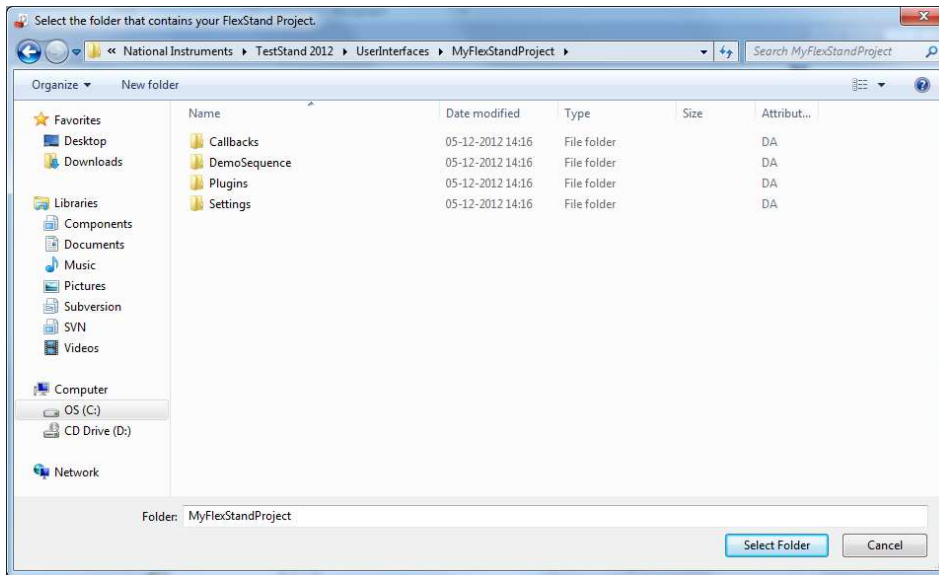
Use the FlexStand config tool to configure FlexStand to use the new location.



Press Open and select the new folder. In this example, it is called "MyFlexStandProject".

FLEXSTAND Operator Interface

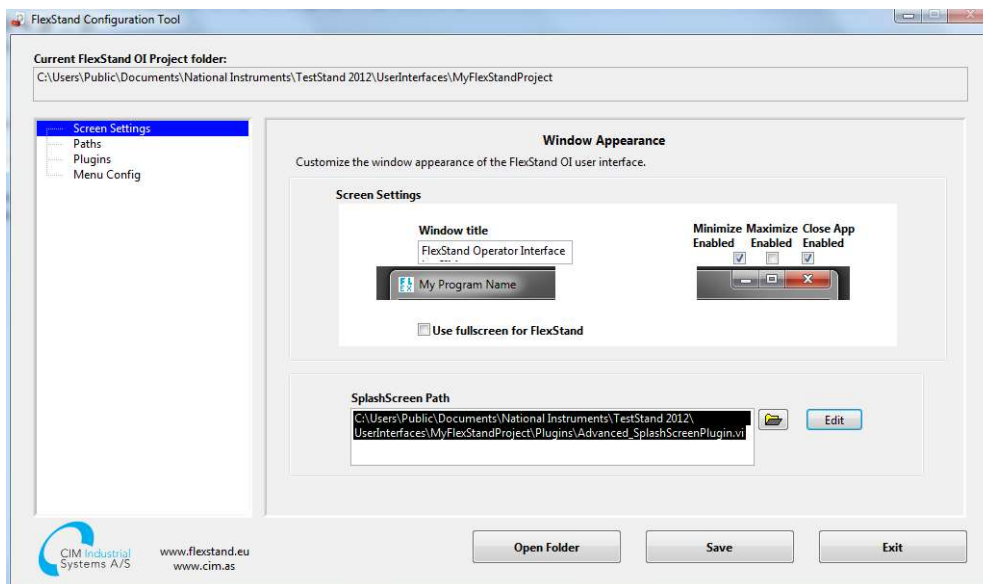
Frequently Asked Question



The following section applies to FlexStand version 9.0 and before. For FlexStand 10 and later continue at "Save the file" below.

FlexStand 9.0 and before:

Change the location of the used splash screen to the new folder:



In this example, it is called:

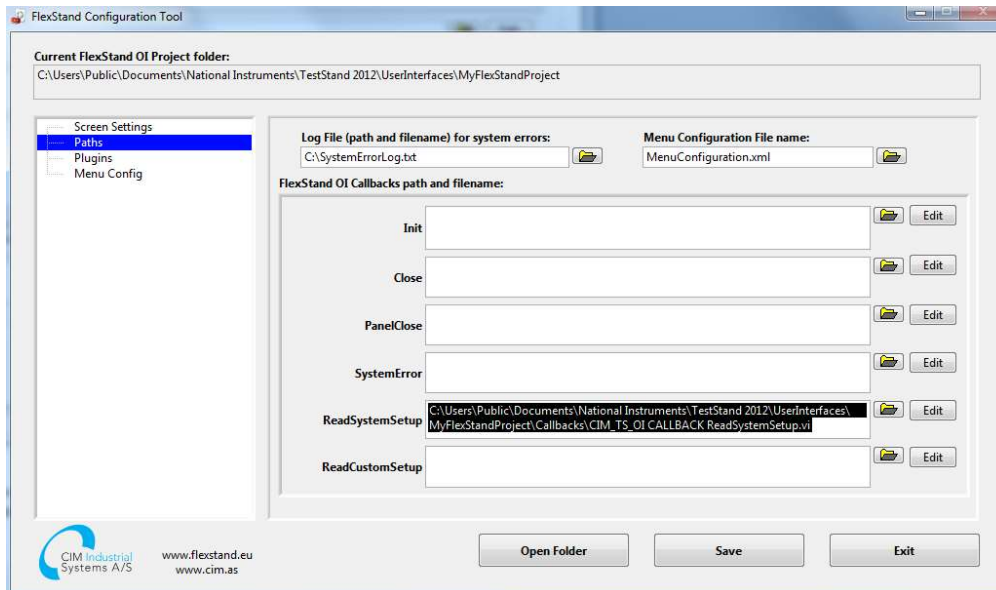
www.flexstand.eu
www.cim.as

FLEXSTAND Operator Interface

Frequently Asked Question

C:\Users\Public\Documents\National Instruments\TestStand
2012\UserInterfaces\MyFlexStandProject\Plugins\Advanced_SplashScreenPlugin.vi

Change the system callback



Change the ReadSystemSetup callback to:

C:\Users\Public\Documents\National Instruments\TestStand
2012\UserInterfaces\MyFlexStandProject\Callbacks\CIM_TS_OI CALLBACK ReadSystemSetup.vi

Save the settings.

Press Exit and save the new settings

If you now start FlexStand from the desktop icon or from the Start menu FlexStand will start with the new project.



To make further configurations to FlexStand, open the config tool and start configuring your FlexStand project.

Refer to the FlexStand manual for a further description of the Config Tool.